

# DANZAPULSE+

## WALL FACE PAN

CODE: DZ210-C

**gallaria**

intelligentbathrooms®



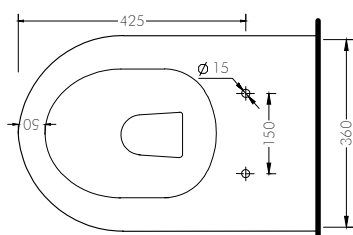
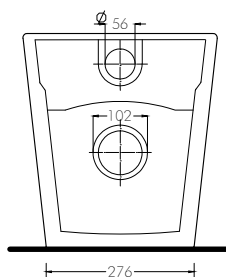
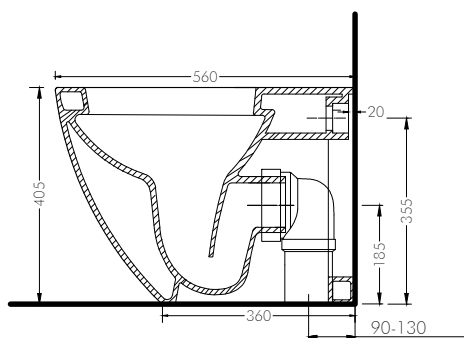
- Inclusions**
- ✓ DANZAPULSE+ Wall Face Pan with Bottom Inlet Intelligent Bidet Seat
  - ✓ Waste pipes
  - ✓ Check valve/ball valve & inlet hose

- Features**
- Heated seat
  - Instantly heated water 35°C-38°C
  - Self-cleaning shower spray nozzle with rear and woman's wash functions
  - Easy to use control knob to adjust and control wash
  - Adjustable flush volume
  - Aerated wash stream
  - Soft close seat
  - Rimless pan for reduced bacteria build-up
  - Remote control excluded

**Note** INTEGRATED BACK FLOW PREVENTION

Integrated Bidet Seat Complies with WMTS-051

- Bidet Seat includes integrated high hazard back flow prevention device, complying with AS Section 4 of AS/NZS2845.1-2010.
- Backflow prevention type: Atmospheric Vacuum Breaker (AVB)



### Notes for the installer

Connection to rain water or grey water is not recommended. It should only be operated with potable/drinking water.

Standard setout: 90-130mm

The maximum water pressure for water supply is 500kpa.

Power supply requirements: Dedicated 10A min, 220~240V AC, 50/60Hz supply

WELS: 0016  
WM: 030025

# DANZAPULSE+

WALL FACE PAN

CODE: DZ210-C

**gallaria**

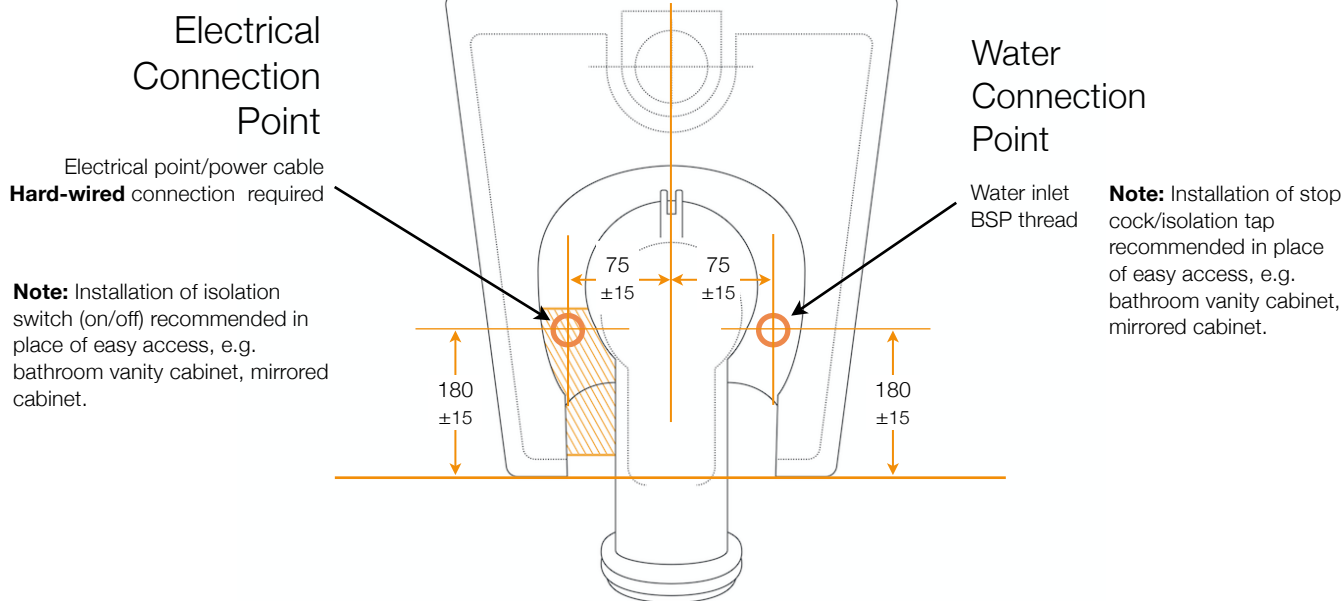
intelligentbathrooms®

## WATER & ELECTRICAL CONNECTION DETAILS

REAR VIEW



REAR VIEW



WELS: 0016  
WM: 030025